

VARIANTES STRUCTURELLES POUR APPARTEMENTS TRAVERSANTS

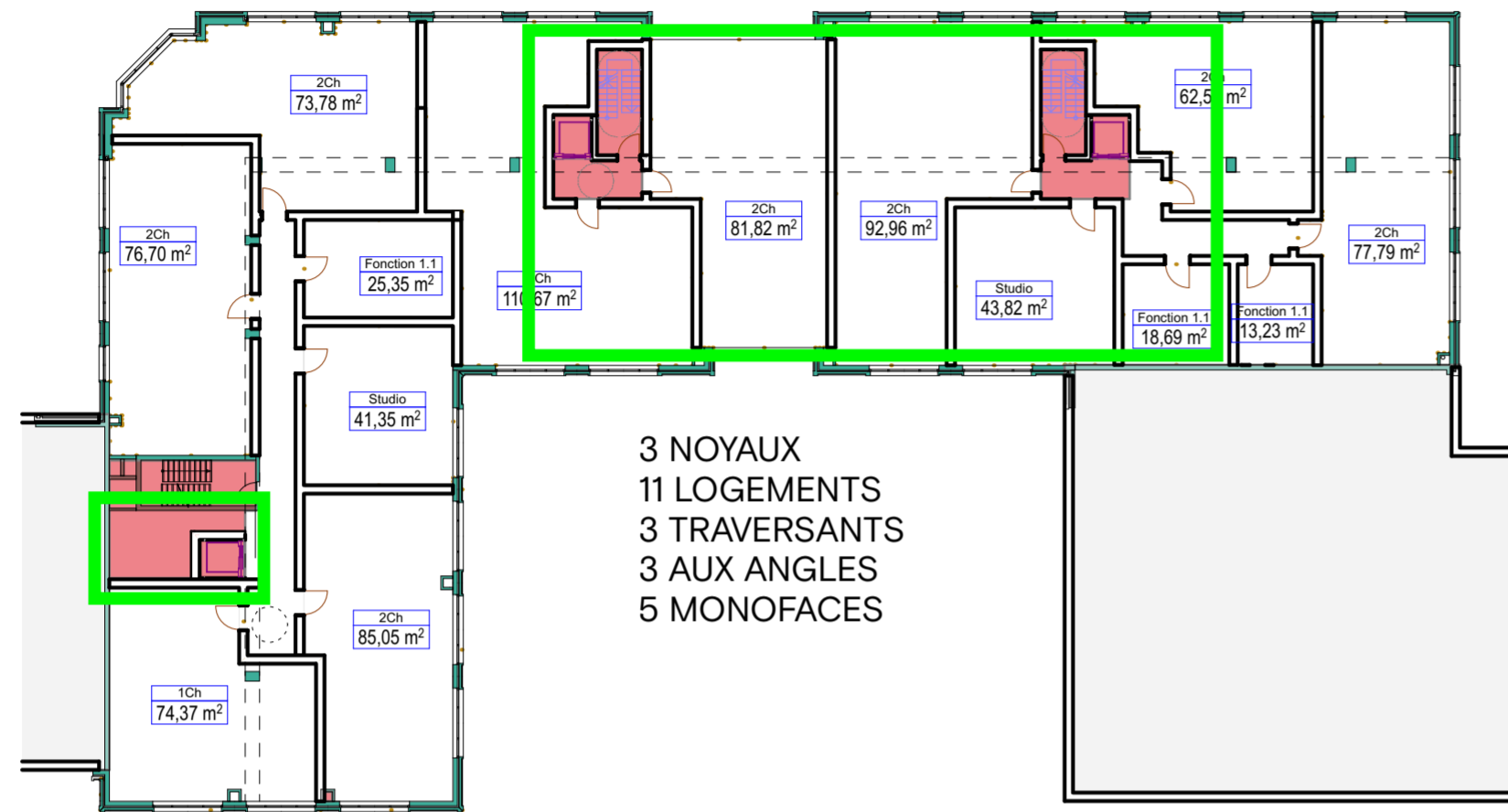
SURFACE D'UN PLATEAU = 1.044 m<sup>2</sup>

ANTARES - BLOC "C"

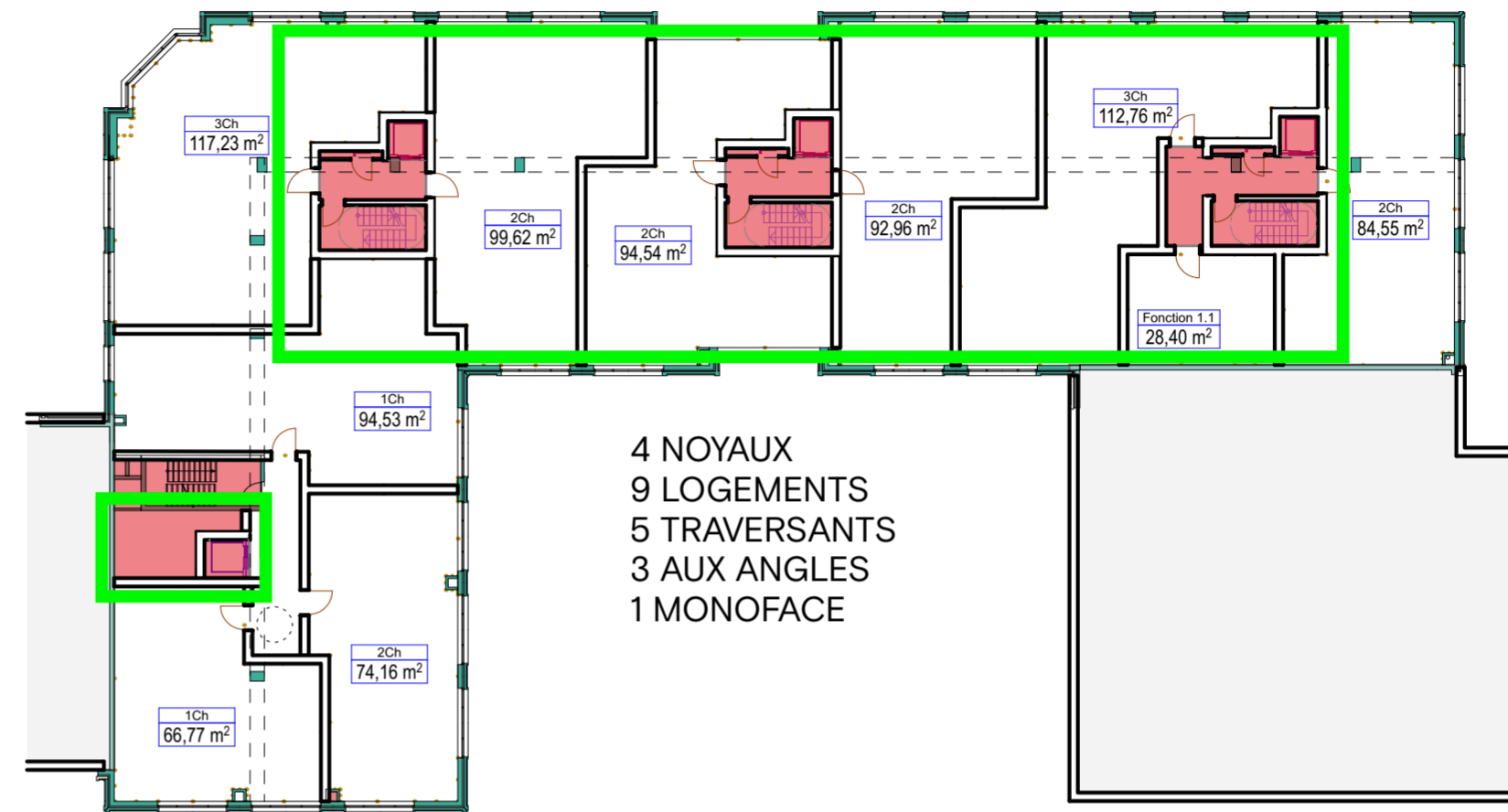
ZONES A DEMOLIR = 505 m<sup>2</sup> (48%)

ZONES A DEMOLIR = 660 m<sup>2</sup> (63%)

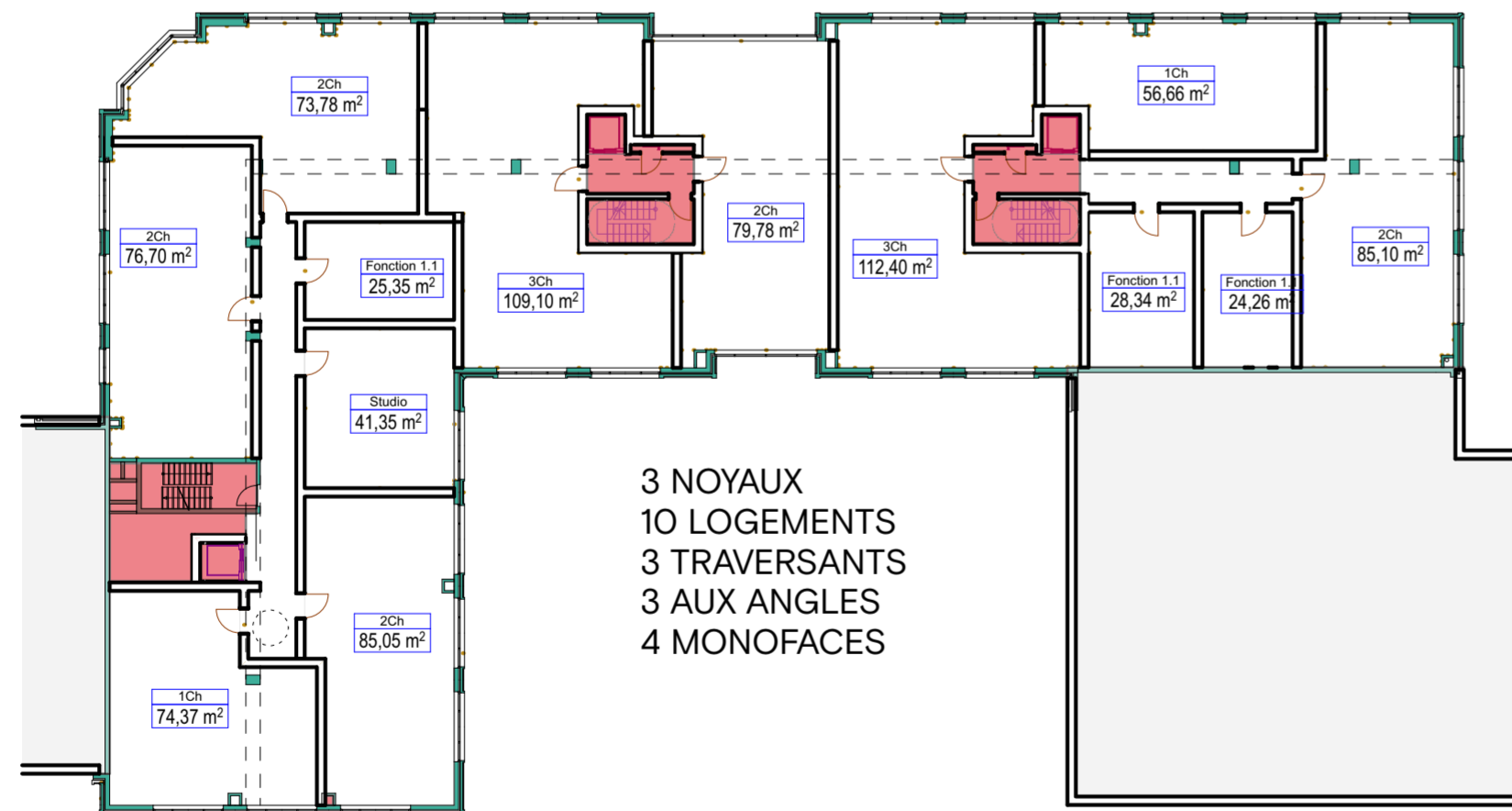
VARIANTE A



VARIANTE C



VARIANTE B



VARIANTE D

